

# FORMAK 629

CONCEALED WATERPROOFING MEMBRANE



032 002  
Environmentally Friendly Paint/Coating

Formak 629 is a single component, solvent free liquid applied elastomeric waterproofing membrane based on polyisoprene polymers. It contains no bitumen or coal tar and will not cause staining to marbles, tiles or tiles grout.

Once cured, it forms a continuous membrane with more than 500% elongation with high tensile strength. It is suitable for used as concealed waterproofing membrane.

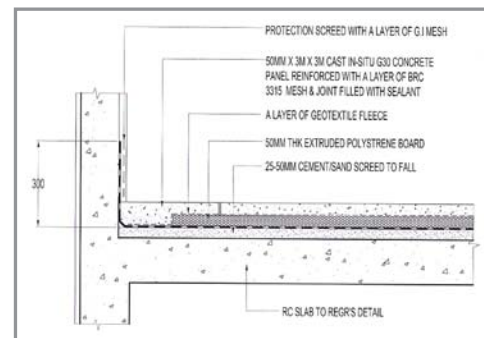


QUEENSTOWN POLYCLINIC - SINGAPORE

## Special Features

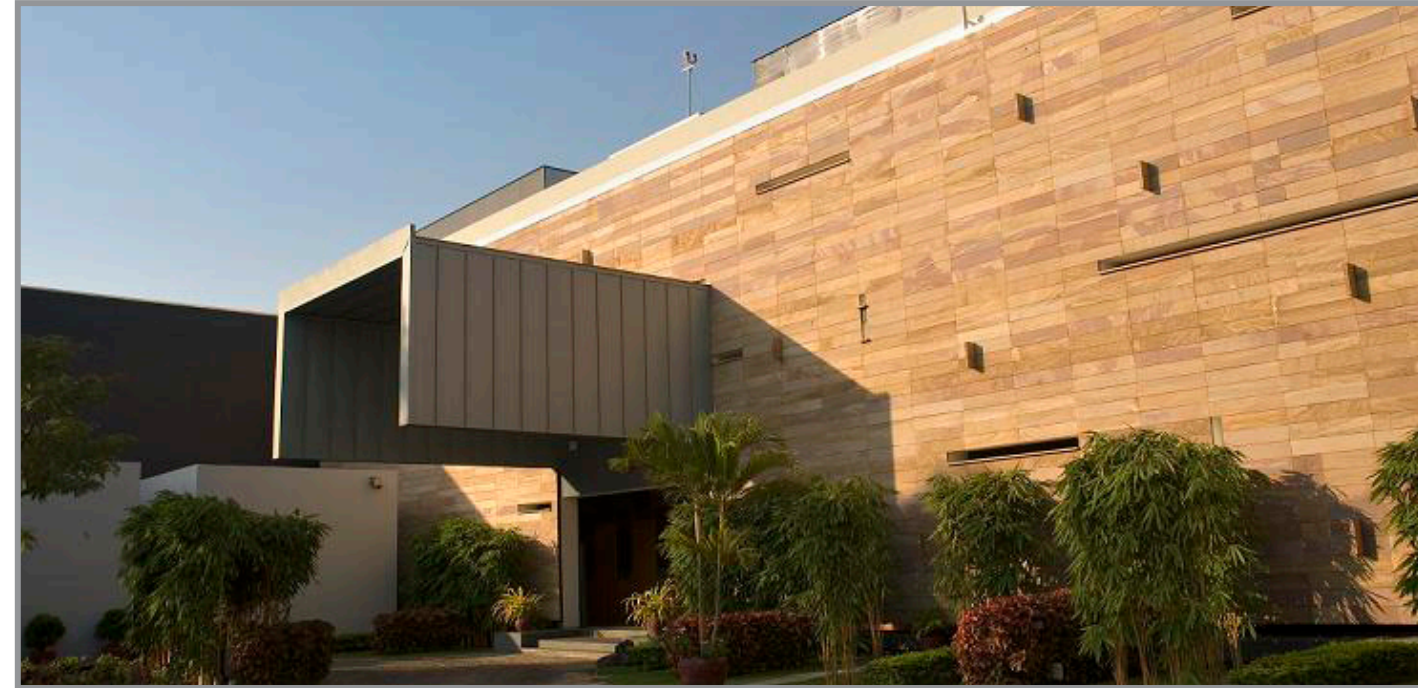
- Single component**  
May be applied directly from the container without the need for on-site mixing
- Seamless**  
Easily applied using a brush or roller eliminates potential failure due to poor joints, Ideal for areas that requires a lot of detailing work
- Flexibility and Strength**  
High elongation and tensile strength to withstand movement within the substrate and high stress areas
- Bitumen and coal-tar free**  
Will not stain marbles, ceramic tiles and pavers
- Water Based**  
Can be applied on damp substrate

- Vapour Permeability**  
Formak 629 is vapour permeable, thus permitting trapped moisture vapour to escape.



## Areas of Usage

- Roof
- Gutters
- Decks and patios
- Driveways
- Wet Areas

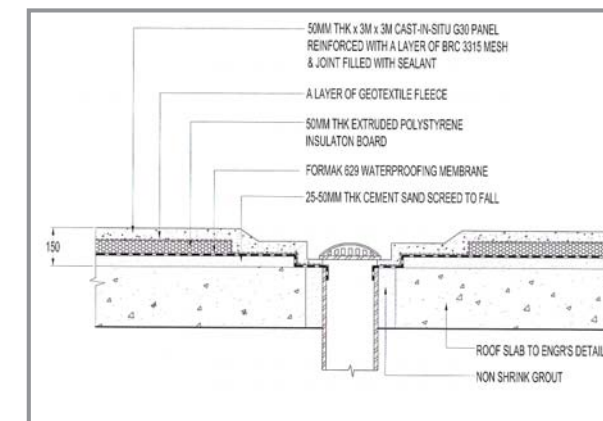


SINGAPORE EMBASSY - CAMBODIA

## Application

### Roof

Apply one coat of Formak 629 primer and leave to dry for minimum 2 hours. Apply Formak 629 at coverage of 0.6l/m<sup>2</sup> onto primed surface and leave dry for minimum of 4 hours. Apply 2nd coat at 0.6l/m<sup>2</sup> and leave to dry for minimum of 24 hours before proceeding with other works.



### Wet areas

Apply one coat of Formak 629 primer and leave to dry for minimum 2 hours. Apply 3 coats of Formak 629 at coverage of 0.4l/m<sup>2</sup> onto printed surface.

Allow minimum 4 hours drying in between coats. After the final coat application, leave membrane to dry for 24 hours before proceeding to other works. Adequate ventilation is required for effective drying between coats.

### Detailings

Apply Formak 629 at 1.0l/m<sup>2</sup> making certain to dress up to at least 150mm from the finished floor level. Immediately roll a layer of fibreglass mat and apply another coat of Formak 629 at 0.5l/m<sup>2</sup>, making sure that the fibreglass is totally embedded into the Formak 629 gel.



1. Application of Primer coat



2. 1st Coat of Formak 629



3. Unroll 100mm width fibreglass mat



4. Coat Formak 629 over fibreglass



5. Application of 1st Formak Topcoat



6. Apply Formak 629 Topcoat

# PROJECTS

## MAIOR PROIECTS



Country Park Condo - Singapore



Holiday Inn Bombay - Mumbai India



Istana Melawati - Malaysia



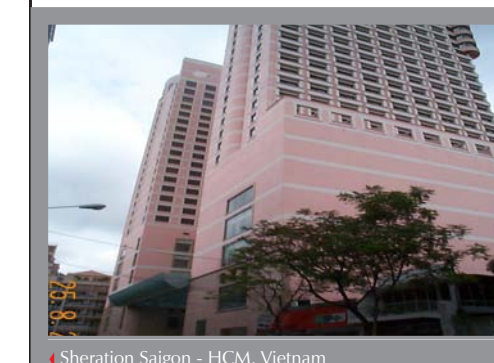
Regatta Icon - Jakarta Indonesia



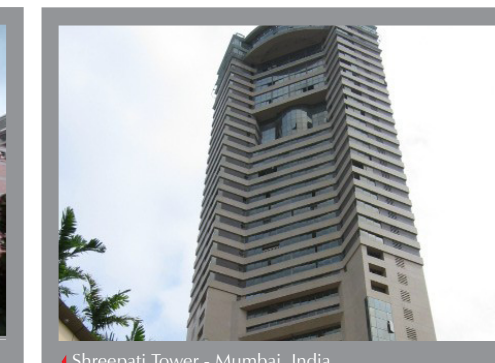
Sengkang Community Hub - Singapore



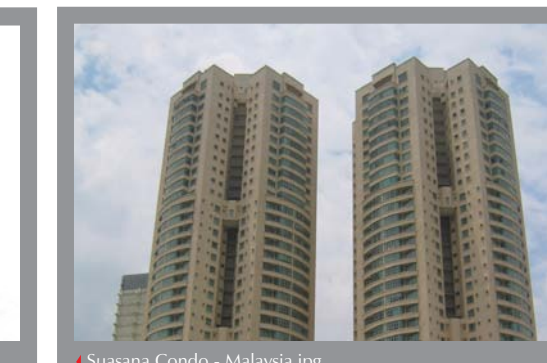
Rockwell Center - Philippines



Sheraton Saigon - HCM, Vietnam



Shreepati Tower - Mumbai, India



Suasana Condo - Malaysia.jpg

# FORMA

# Hitchins

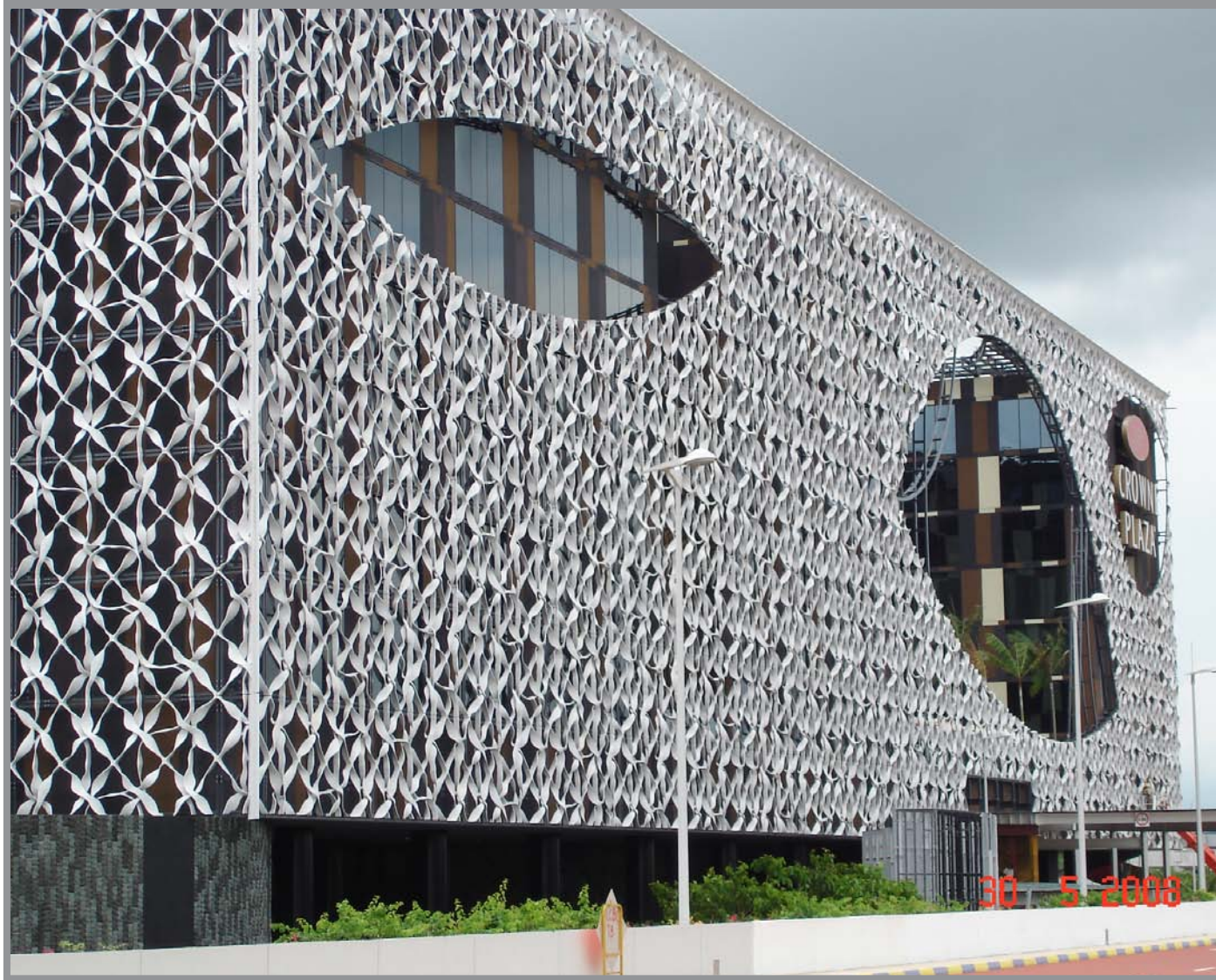


**Hitchins**  
since 1932



032 002  
Environmentally Friendly Paint/Coating

CROWNE PLAZA TERMINAL 3 - SINGAPORE



**WATERPROOFING  
& BUILDING PROTECTION**

## Distribution Network



### SINGAPORE

**Hitchins (FE) Marketing Pte Ltd**  
30, Toh Guan Road #07-01  
ODC District Centre  
Singapore 608840  
Telephone: (65) 6861 1177  
Facsimile: (65) 6863 4240  
Email: [hitchins@hitchins.com](mailto:hitchins@hitchins.com)

### MALAYSIA

**Hitchins (Malaysia) Sendirian Berhad**  
No. 26 Jalan 4/10B  
Spring Crest Industrial Park 68100 Batu Caves, Selangor, Malaysia  
Telephone: (60-3) 6185 8888  
Facsimile: (60-3) 6185 0668  
Email: [hitchins@streamyx.com](mailto:hitchins@streamyx.com)

### CHINA

**Shanghai Hitchins Da Sheng Waterproofing Materials Co., Ltd**  
No. 58, 699 Nong, Bei Qing Gong Lu Hua Cao Zhen, Ming Hang Qu Shanghai P.R.  
China Post Code 201107  
Telephone: (86-21) 62219815/7/9 Facsimile: (86-21) 6221 9812  
Email: [samkim@hitchins.com](mailto:samkim@hitchins.com)

### BRUNEI

**Hitchins (Borneo) Sendirian Berhad**  
P.O. Box 1675  
Bandar Seri Begawan 1916  
Telephone: (673-2) 652561  
Facsimile: (673-2) 652563

Hitchins Approved Applicator



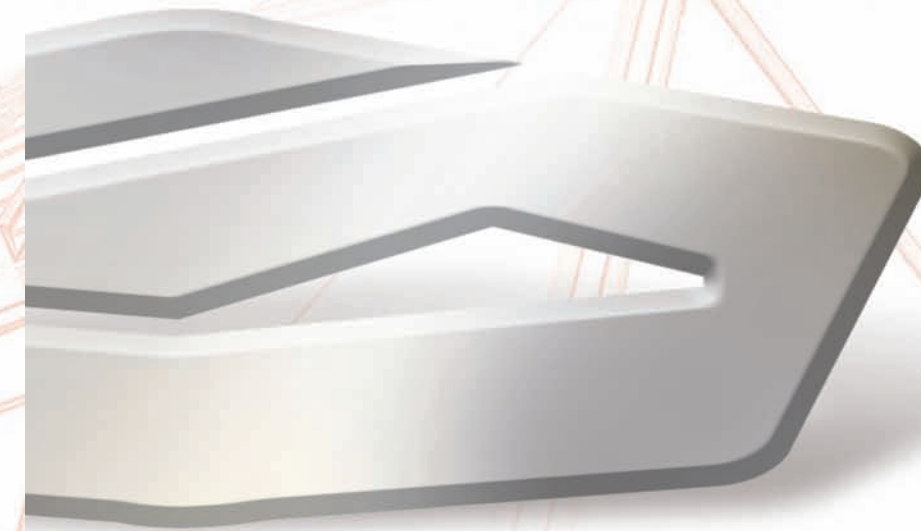
## Hitchins (FE) Marketing Pte Ltd

Tel: (65) 6861 1177 Fax: (65) 6863 4240

Email: [hitchins@hitchins.com](mailto:hitchins@hitchins.com) [Http://www.hitchins.com](http://www.hitchins.com)

# FORMAK 629

## CONCEALED WATERPROOFING SYSTEM



ISO 9001  
BUREAU VERITAS  
Certification



### WARRANTY INFORMATION

Only Hitchins' trained applicators are approved to undertake all application work. Hitchins products carry a long-term warranty for both materials and workmanship. The warranty is further backed by Hitchins International Fidelity Fund. Please check with our local applicators if this fund is available in your country. For complete warranty and other related information, please contact Hitchins regional offices.

Revision A